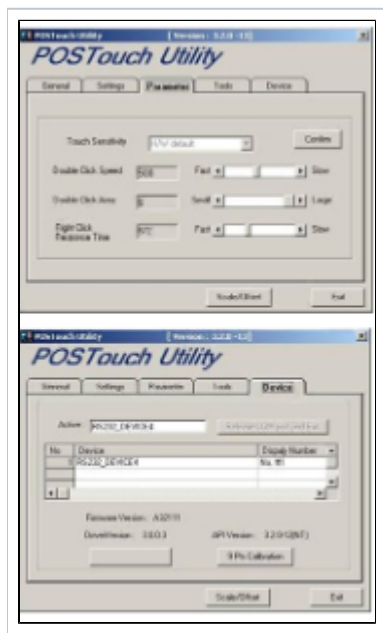


# Touch Screen Settings for APM 2002 & 2700

Touch screen sensitivity may be adjusted by making changes to the settings in the touch screen driver on the machine. To do this, go to the **Start Menu > Programs > Touch Utility**, and open the Touch Utility application. From there, select the "Parameter" tab, and ensure that the preferences are set as outlined in this screenshot:



Next, click on the Device tab, and then the **9 Pts Calibration** button. Run through the calibration utility as instructed on screen, pressing and holding each dot on screen until prompted to move to the next step.

If after making these changes the touch screen is not responding properly, please provide the APM ID and the serial number off of the back of the machine, and we can issue an RMA number for repair.