

# Configuring PayPal Payments



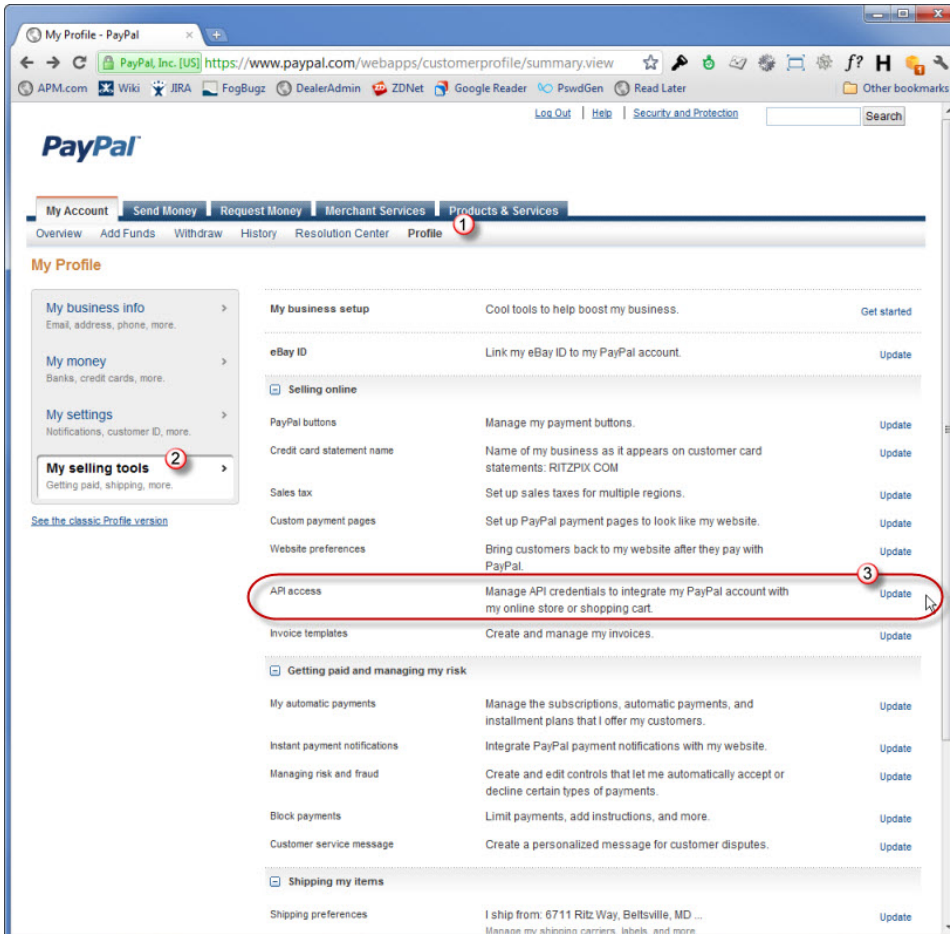
## Important Note on Paypal Setup

PayPal payment processing is a new feature of **Photo Finale 8 / Lab 50 8**. If you have not migrated yet, please contact your account manager.

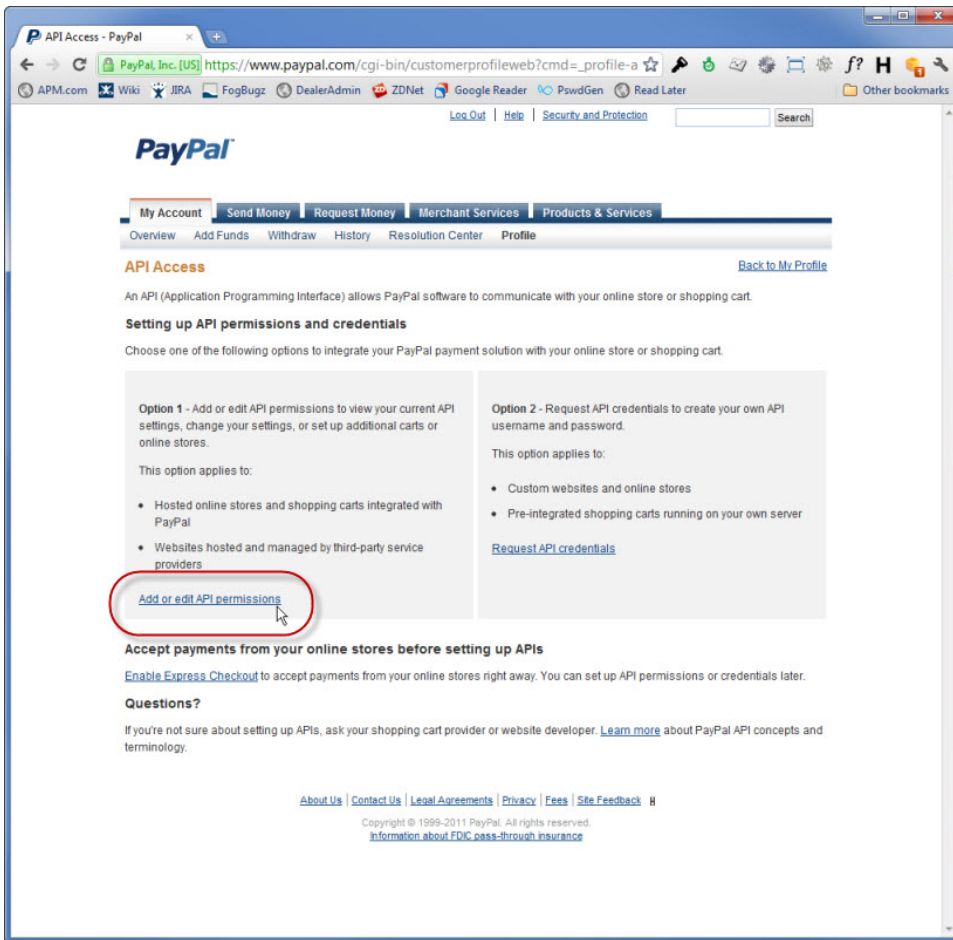
Also, to ensure proper setup of integrating PayPal, please make sure to read and follow the steps on this page top to bottom.

## Configuring Your Account in PayPal

- Sign up for a new business account in PayPal, or log into an existing business account that you have.
- Click on the Profile link, followed by "My selling tools", then "API access".



- Click on the "Add or edit API permissions" link.



- Click on the "Add New Third Party" button.



- Enter the username "paypal\_api1.lucidiom.com" and hit the "Lookup" button.

Third Party Permission Username	<input type="text" value="paypal_api1.lucidiom.com"/>	<input type="button" value="Lookup"/>
---------------------------------	---	---------------------------------------

- Select each of the API permissions shown here and then hit the "Add" button.

### Available Permissions

See the [Third Party Definitions](#) for help.

- ☒ Use Express Checkout to process payments.
- ☒ Issue a refund for a specific transaction.
- ☒ Process your customers credit or debit card payments.
- ☒ Authorize and capture your PayPal transactions.
- ☒ Create and manage PayPal payment buttons on your website.
- ☒ Obtain your PayPal account balance.
- ☒ Obtain information about a single transaction.
- ☒ Search your transactions for items that match specific criteria and display the results.
- ☒ Charge an existing customer based on a prior transaction.
- ☐ Create and manage Recurring Payments.
- ☐ Obtain authorization for pre-approved payments and initiate pre-approved transactions.
- ☒ Accept or deny a pending transaction.
- ☒ Issue a refund for any prior transaction.
- ☐ Initiate transactions to multiple recipients in a single batch.
- ☐ Dynamically encrypt PayPal payment buttons on your web site.
- ☐ Consolidate funds from two or more accounts to a master account.
- ☒ Generate consolidated reports for all accounts.
- ☒ Use Express Checkout to process mobile payments.
- ☐ Authorize transactions with Universal Air Travel Plans.
- ☐ Manage your invoicing through a third party.
- ☐ Generate reports for recurring billing and other outstanding orders.
- ☒ Capture payments in batches.
- ☒ Run dispute reports and issue batch refunds.
- ☐ Create and modify accounts, and run reports on them.

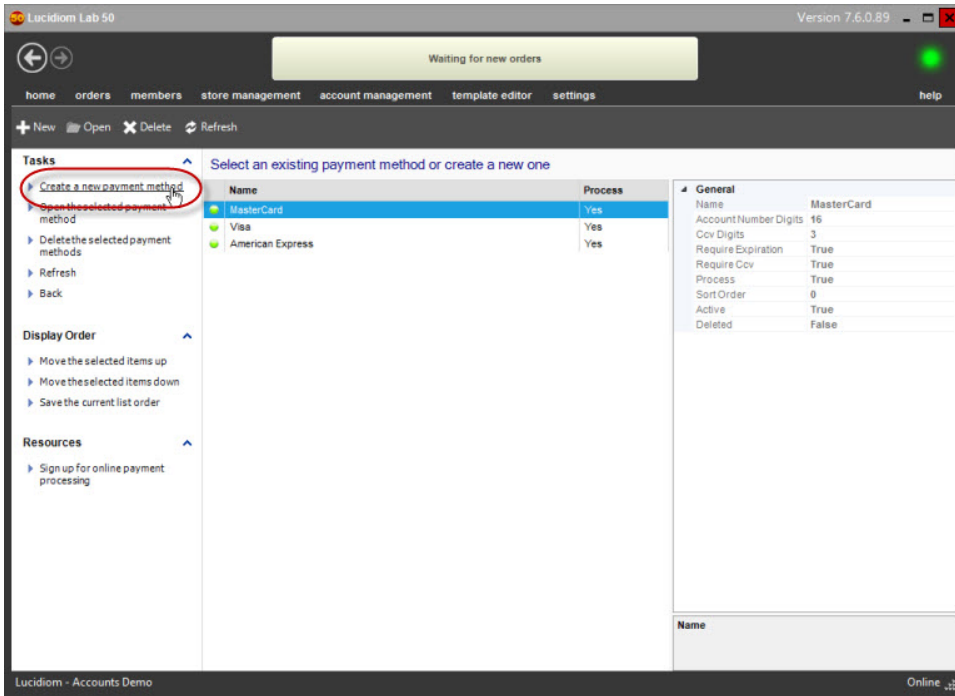
Add

Cancel

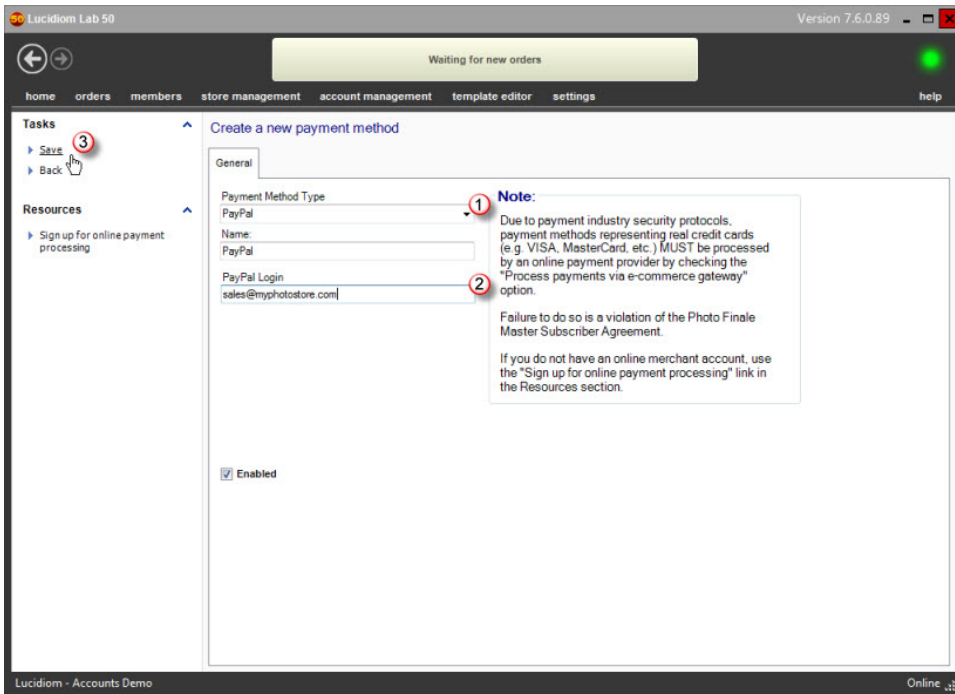
Your PayPal configuration is complete. Now you'll finish the setup in Lab 50.

### Configuring PayPal in Lab 50

- In Lab 50, navigate to Store Management -> Payment methods.
- Click on the "Create a new payment method" link.



- On the Payment Method details screen, select "PayPal" from the type dropdown, then enter your PayPal account email address into the "PayPal Login" field. Finally, hit the "Save" link.



Your Lab 50 configuration is complete. PayPal will show up as a payment option on your website within 60 minutes. Once it is available, please be sure to test a full transaction to ensure your setup is working.

### Lucidiom Enabling PayPal Access for your Account

- The final step required is for Lucidiom to link your dealer account to PayPal in the Lab 50 central database. Please contact your Lucidiom Account Manager and request that we finalize the PayPal setup for your dealer code.

**Important Info Regarding Final Steps for PayPal Setup**

Using Paypal for payments will not work until the PayPal Access for your Account/Dealercode has been setup on the Lucidiom Servers and verified as setup by Lucidiom.